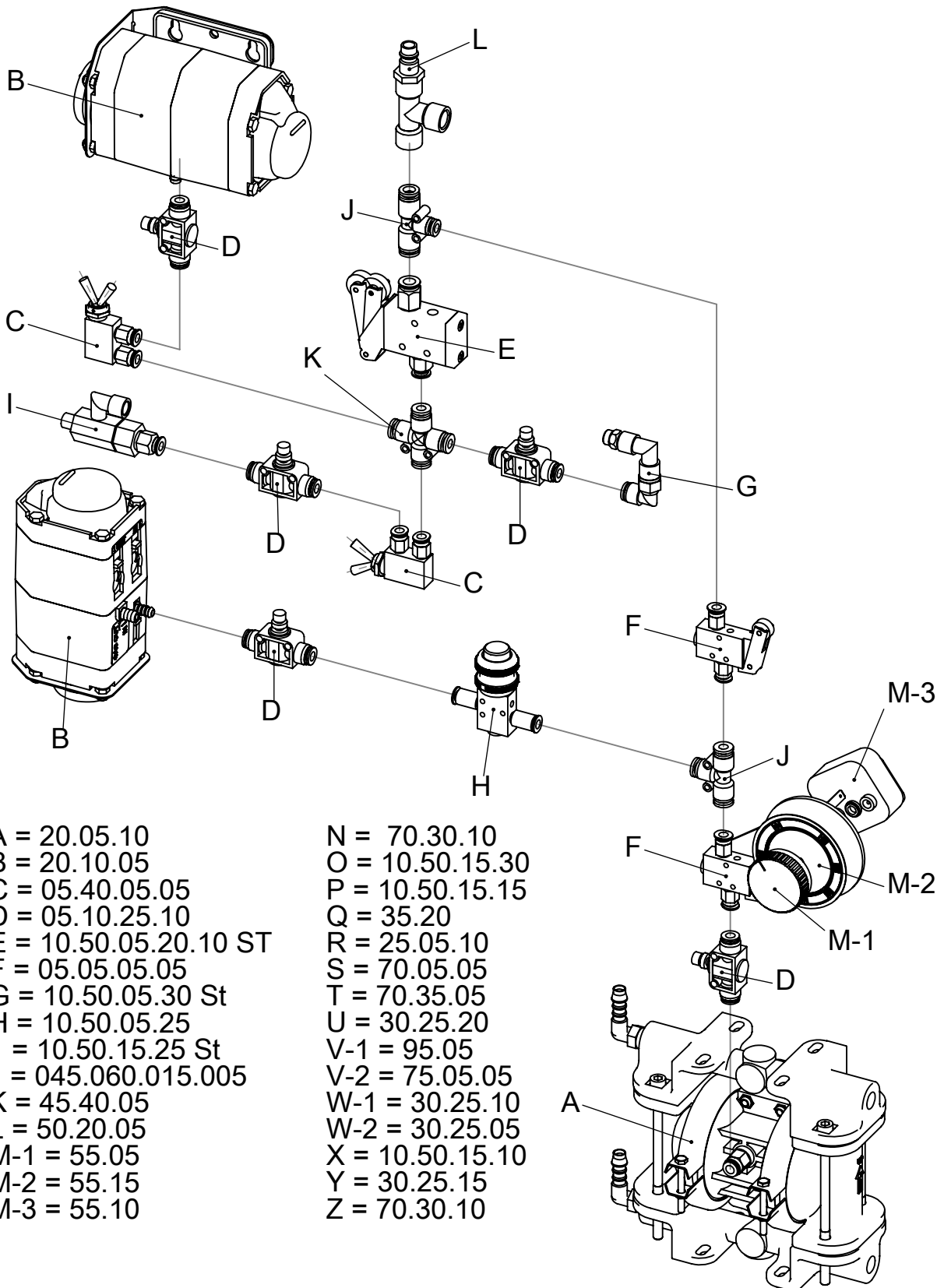


B-TEC Pneumatikplan und Ersatzteil-Bestellnummern

Typ: UD-800 Seite 1



- A = 20.05.10
- B = 20.10.05
- C = 05.40.05.05
- D = 05.10.25.10
- E = 10.50.05.20.10 ST
- F = 05.05.05.05
- G = 10.50.05.30 St
- H = 10.50.05.25
- I = 10.50.15.25 St
- J = 045.060.015.005
- K = 45.40.05
- L = 50.20.05
- M-1 = 55.05
- M-2 = 55.15
- M-3 = 55.10

- N = 70.30.10
- O = 10.50.15.30
- P = 10.50.15.15
- Q = 35.20
- R = 25.05.10
- S = 70.05.05
- T = 70.35.05
- U = 30.25.20
- V-1 = 95.05
- V-2 = 75.05.05
- W-1 = 30.25.10
- W-2 = 30.25.05
- X = 10.50.15.10
- Y = 30.25.15
- Z = 70.30.10

B-TEC Ersatzteil-Bestellnummern

Typ: UD-800

